

**CALGARY
RIVER
VALLEYS**

We are the voice of our rivers

Watersheds 101

www.CalgaryRiverValleys.org

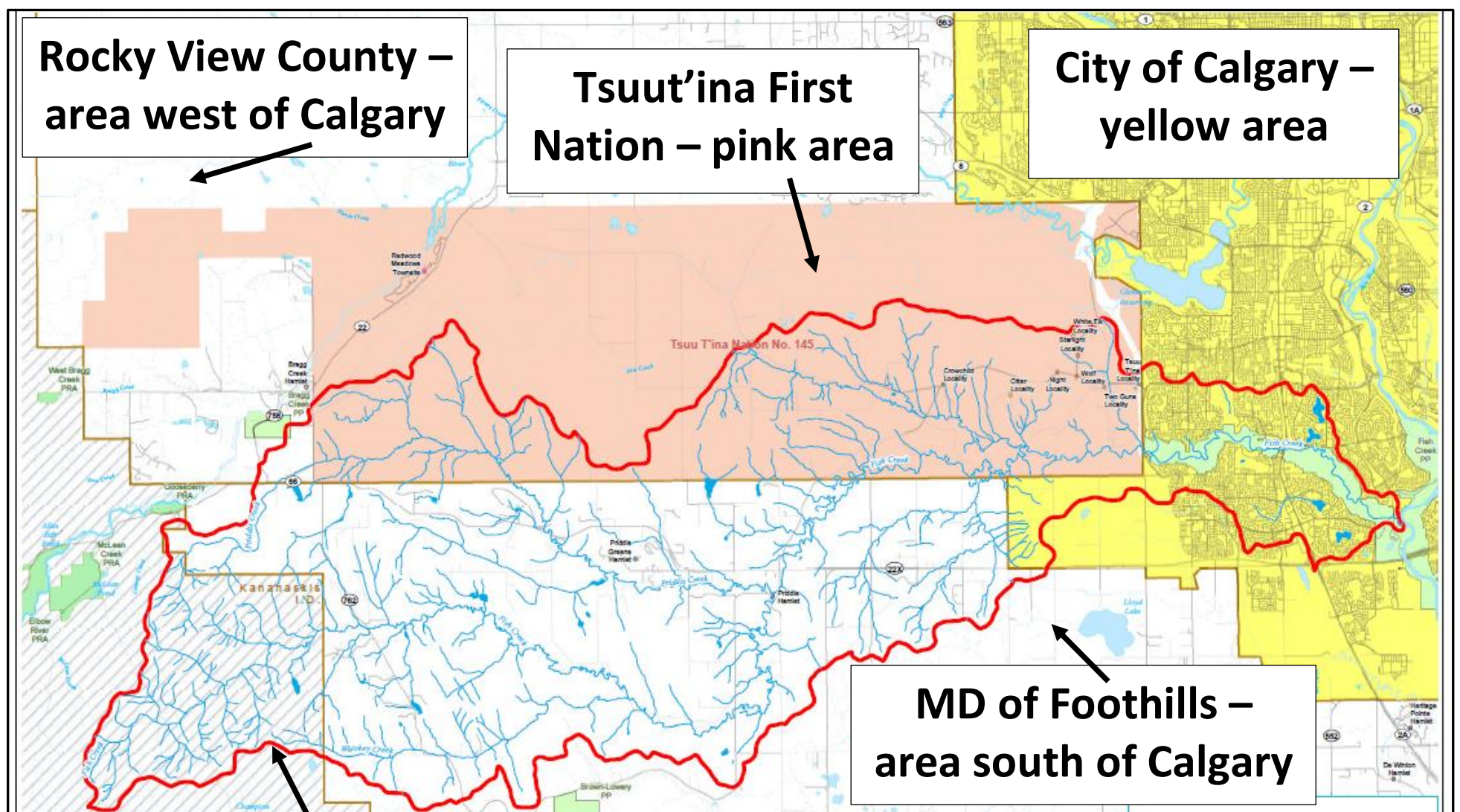
What is a watershed?

- A drainage basin
- Land that collects all water & run-off into a particular stream, creek, or river

What is a sub-watershed?

- A smaller drainage basin
- A tributary to a larger watershed
- Fish Creek is a sub-watershed, or tributary, to the Bow River watershed

Almost all Calgarians live in the Bow River watershed, and in 1 of 6 sub-watersheds (our 2 rivers & 4 main creeks) – can you name them all?



Fish Creek Watershed – outlined in red
Note all the tributaries (small streams & creeks) that flow into it

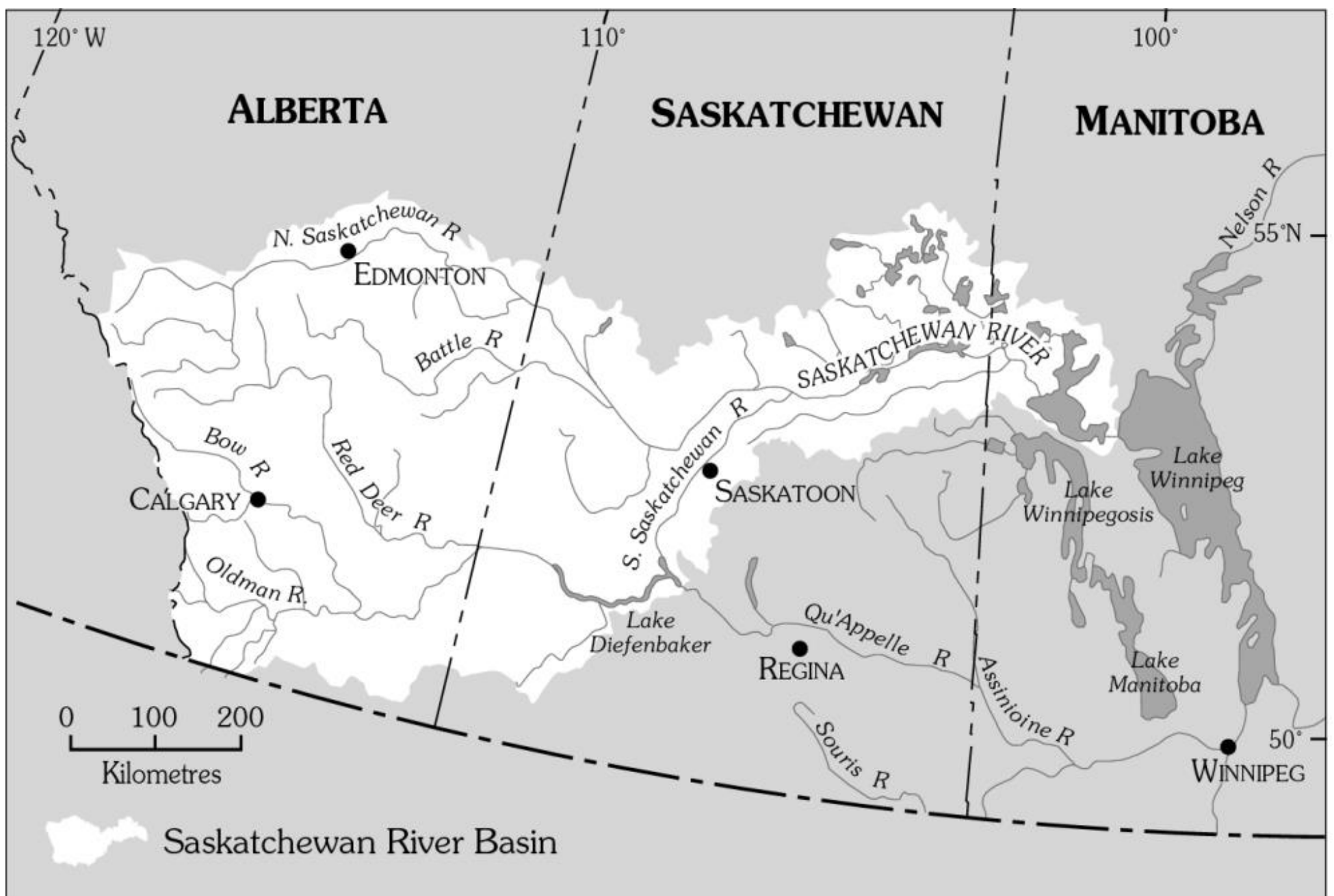
Graphic courtesy of Alberta Environment & Parks

What is a confluence?

- The point where one stream, creek, or river joins another
- Fish Creek is a tributary to the Bow River
- Can you find the confluence of Fish Creek & the Bow River?

Where does Fish Creek water flow?

- The Bow River joins with the Oldman River to make the South Saskatchewan River
- The South Saskatchewan joins the North Saskatchewan River forming the Saskatchewan River, which flows to Lake Winnipeg
- Lake Winnipeg drains to the Nelson River, which flows to Hudson Bay in the Arctic Ocean



Saskatchewan River Watershed graphic courtesy of SEAWA (Southeast Alberta Watershed Alliance)